



A MADOR L EWIS, INC

CONSULTING ENGINEERS

"Providing Structural Engineering Solutions with Creative Options"



CONTENTS

MISSION = VISION + VALUES

INTRODUCTION

WHO WE ARE

- ◆ COMPANY HISTORY
- ◆ COMPANY GOALS

WHAT WE DO

"Providing Structural Engineering Solutions With Creative Options"

OUR CAPABILITIES

- ◆ Project Management
- ◆ Structural Engineering Services
- ◆ Design Review Third Party Services
- ◆ Forensic Engineering Services
- ◆ Training

THE WORK PROCESS

- I. Requesting Services
- II. Proposal Development
- III. Proposal Package
- IV. Engineering Work Order (EWO)
- V. Coordination
- VI. Reviews
- VII. Progress Reporting
- VIII. Monthly Report
- IX. Completion

PROJECT LIST

- ◆ Residential
- ◆ Commercial
- ◆ Industrial
- ◆ Institutional
- ◆ Forensic Engineering
- ◆ Non-Building Structures

JOIN OUR FAMILY

Key Members & Contribution

EMPLOYMENT OPPORTUNITIES

ATTACHMENTS

- I. Key Contacts
- II. Request For Quotation (RFQ)
- III. Engineering Work Order (EWO)
- IV. Typical EWO Activity Diagram
- V. Organization Chart
- VI. Key Member Profiles

P.O. Box 2999, Turlock, CA 95381 Tel 209.667.7298 Fax 209.667.7281 www.amadorlewis.com



MISSION = VISION + VALUES

Mission

AMADOR LEWIS, INC., is committed to providing consistent high quality structural engineering solutions with creative options delivered on schedule and within budget, while fostering consistent, prudent growth in becoming a leader in our industry.

AMADOR LEWIS, INC., aims to achieve this mission by committing to help each member of its family develop their technical and managerial capabilities, while achieving personal satisfaction and a sense of accomplishment.

Vision

To be the global source of structural engineering solutions with creative options.

- **Our partners and customers will view our company as an integral part of their success.** We will embrace their needs, stand by our word, and deliver on every commitment we make.
- **People will be proud to become a member of the A L I family.** We will create opportunities to achieve individual and team goals, and we will reward success.
- **Communities will give high regards to our social proactive stance and responsibilities.** We will integrate global and local perspectives, promote sound management of resources, and contribute to a better quality of life.

Values

Building on a strong family heritage to span generations, we will continue to be privately owned by active management and guided by firmly held values.

- **Ethics.** Integrity, honesty, and fairness will remain the heart of our company, and will not be compromised.
- **Excellence.** We exercise high standards, maximize quality, minimize costs, apply advanced technology, continue to innovate and improve our processes and expand our knowledge, as we thrive on challenge and accomplishment.
- **Mutual Respect.** We work by our leadership, which encourages openness, teamwork, and trust, as we value a culture based on diverse backgrounds, experience, and views.
- **Sustainability.** We plan and act for the future – for long-term good of our company, our partners, and our world.



INTRODUCTION

This document provides an introduction to **AMADOR LEWIS, INC., CONSULTING ENGINEERS**; describes the range of services available; gives general guidelines for obtaining those services, and outlines the responsibilities for a successful project.

AMADOR LEWIS, INC., has launched a business plan with a modest start, but a global long-term consistent growth. The founders of **ALI**, Alvin E. Lewis, Jr., and Rapunzel J. Amador Lewis, have accumulated 33 years of experience in structural engineering, design, consulting, detailing, and project management. The record of continued growth that the company has experienced was due to our quality design and service to our clients, and our future success depends upon the continuation of our efforts and adherence to the highest professional standards and ideals, guided by our firmly held values.

ALI maintains an in-house core group of qualified engineers, designers, draftsmen and support staff to handle any complexity and size projects. These experienced personnel ensure that a cost effective and quality service is provided. The in-house effort is supported by global Engineering and Drafting services Contractors to meet peak demands in the workload.

ALI has developed a fully integrated project control system that ensures work is efficiently planned and budgeted. This is complemented by a networked and computer information system, providing database controlled data and drawing documentation on all current and completed projects.

ALI has also established a technical library that contain the latest building code standards and vendor information; reference materials; trade publications; and training aids, utilizing electronic media wherever possible. In addition, the library contains records of all **ALI** completed projects that are available for the use of employees and clients.

On the job training continuing education and development opportunities are provided to all **ALI** members. The Founders believe that each member of the family should be provided a working atmosphere that will motivate him/her to do his/her best, thus fostering productivity. Based on this belief, members of our family will experience the opportunity for growth to reach their maximum potential, allowing for both professional and personal accomplishment.



WHO WE ARE

Company History

In late February 2003, [Alvin Lewis, Jr.](#) opened a part-time home-based design and drafting business in his hometown of Turlock, California. Alvin graduated in 1984 with an A.S. degree in Commercial Engineering Drafting and Technology from Bailey Technical School in St. Louis, Missouri. During his college years, he worked for a local commercial aircraft manufacturer, detailing small parts. After earning his A.S. degree, he then landed a job as a Detailer for ARMCO, a metal building manufacturer, based in St. Louis, Missouri. He was then recruited to work for its competitor, Varco-Pruden Buildings, after 6 years, when ARMCO closed its Missouri branch for business. He was relocated to work at VP's Turlock, California profit center, in October 1990. For over 15 years with V.P. Bldgs., Alvin assumed three positions with varying responsibilities as Project Technician, Project Manager, and Estimator.

Inspired by his wife [Rapunzel J. Amador Lewis, P.E.](#), whom he met at V.P. Bldgs. back in August of 1994 where she also started her career in structural engineering design of metal buildings, Alvin took a CAD course at Modesto Junior College to brush up on his drafting skills. Little did Rapunzel realize how fast and soon Alvin would spark his interest back performing CAD operations. As a matter of fact, it only took him a few weeks to realize he wanted to hang a shingle and start his own drafting business on the side, and named it ALL Design & Drafting Services (ADDS).

Alvin's first project was helping out his co-basketball teammate finish the architectural plans for their residence addition and remodel in Turlock, CA. From this first project in February of 2003, new clients would soon be referred by previous clients and annual service revenues would more than triple every year thereafter. It would be a shared effort between Alvin and Rapunzel, with Alvin bringing in new customers and providing CAD services, while Rapunzel provided architectural and structural design and engineering services for a variety of residential projects. In addition, drafting services would be provided for civil plans and drawings for other local Civil Engineers.

Rapunzel, who obtained her B.S. degree in Architectural Engineering from Cal Poly, San Luis Obispo, in June of 1994, landed her first job out of college with V.P. Bldgs., where she designed commercial and industrial metal building projects ranging in complexity and size. After 5 ½ years with V.P. Bldgs., and completion of hundreds of building projects, she moved on to gain more experience in the conventional structural building design and consulting, and joined several engineering consulting firms and a construction company all located in Modesto, California: JH Lawder, Inc., Structural Engineers, Panelized Structures, Inc., and Comple Engineering Group, Inc.

Projects for All Design and Drafting Services grew in scope and Rapunzel realized that it would be beneficial for her to hit the books and learn more about running a business, with the ultimate goal of expanding a full-service structural engineering firm. In spring of 2005, Rapunzel decided to start pursuing her Masters in Business Administration at the CSUS in their hometown of Turlock, CA. After completing 27.0 units of business foundation courses, Rapunzel decided it was time to put her business plan into action!

On December 20, 2005, Alvin and Rapunzel filed for Articles of Incorporation, and what was then ALL Design & Drafting Services was renamed **AMADOR LEWIS, INC., CONSULTING ENGINEERS**. "Providing Structural Engineering Solutions With Creative Options".

P.O. Box 2999, Turlock, CA 95381 Tel 209.667.7298 Fax 209.667.7281 www.amadorlewis.com



WHO WE ARE

Company Goals

AMADOR LEWIS, INC., has launched a business plan with a modest start, but a global long-term consistent growth. The founders of **ALI**, Alvin E. Lewis, Jr., and Rapunzel J. Amador Lewis, have accumulated 40 years of experience in structural engineering, design, consulting, detailing, and project management. The record of continued growth that the company has experienced was due to our quality design and service to our clients, and our future success depends upon the continuation of our efforts and adherence to the highest professional standards and ideals, guided by our firmly held values.

The Founders believe that each member of the family should be provided a working atmosphere that will motivate him/her to do his/her best, thus fostering productivity. Based on this belief, members of our family will experience the opportunity for growth to reach their maximum potential, allowing for both professional and personal accomplishment.

WHAT WE DO

"Providing Structural Engineering Solutions With Creative Options"

STRUCTURAL ENGINEERING DESIGN AND ANALYSIS

We provide structural engineering calculations/report package and drawings to include vertical load analysis, foundation design, and lateral load analysis for the following projects:

- **New Construction**
- **Tenant Improvements**
- **Seismic Strengthening/Retrofit**
- **Forensic Engineering**
- **Conservation of Historic Buildings**
- **Research and Development**
- **Non-Building Structures**

STRUCTURAL ENGINEERING REVIEW

We provide third-party review of structures and components designed by external Professional Engineers, who remain in Responsible Charge of the following projects:

- **Pre-engineered Building Systems**
- **Pre-Engineered Building Components**

STRUCTURAL ENGINEERING BUSINESS DEVELOPMENT

We provide the following value added engineering design and detailing services to supplement and enhance existing engineering design and detailing practices of established manufacturers of structural building systems:

- **Product Training, Engineering and Detailing Support for Pre-engineered Metal Building Manufacturers**
- **Product Training, Engineering and Detailing Support for Builders and Suppliers of Panelized Roof Structures**

OUR CAPABILITIES

The following lists the main types of services that may be requested routinely. The appropriate Engineering Project Manager identified in Attachment IV can provide further information.

PRE-DESIGN ENGINEERING

- Project Feasibility Studies
- Field Investigations & Development of Projects Scopes
- As-Builts Drawings

ENGINEERING DESIGN AND ANALYSIS

- Conceptual Designs
- Preliminary Engineering/ R&D
- Structural Evaluation
- Final Detailed Designs
- Submittal Packages
 - Scope of Work
 - Vendor Drawings, Data Reviews
 - Structural Calculations Package
 - Structural Plans, Specifications and Details

ENGINEERING SUPPORT IN CONSTRUCTION

- Shop drawings review
- Technical support of **A L I** design work
- Field Modifications/Substitution Evaluation
- Field Fixes/Reinforcements

ENGINEERING REVIEW

- Third-Party Plan Review
- Third-Party Structural Calculations Review

ENGINEERING BUSINESS DEVELOPMENT

- Customize engineering outsourcing needs for established manufacturers of engineered building systems and components to enhance and supplement existing processes during peak workload.
- On the Job Training (OJT) for Designers, Draftsmen, and Detailers.
- Product training for Manufacturer's new hires.
 - Pre-Engineered Metal Buildings
 - Panelized Roof Structures

PROJECT MANAGEMENT

AMADOR LEWIS, INC. has Project Management services that provide extensive experience in commercial and industrial construction projects. Project experience includes new and renovation project work. Project managers work closely with designers, engineers and construction contractors to insure all specifications are met according to all standards. Budget and schedule requirements are monitored closely to meet project objectives. Services can be provided as a complete package or individual services.

- ◆ COST ENGINEERING
- ◆ DOCUMENTATION
- ◆ FEASIBILITY STUDIES
- ◆ MANAGEMENT INFORMATION SYSTEMS
- ◆ PLANS CHECK
- ◆ SCHEDULING/PLANNING
- ◆ START-UP INSPECTION & VALIDATION
- ◆ TRAINING

STRUCTURAL ENGINEERING SERVICES

AMADOR LEWIS, INC. has developed Structural Engineering Services for architectural support and also to meet the needs of General Contractors of residential, commercial, industrial, and institutional projects and developments.

AMADOR LEWIS, INC. is committed to providing our clients with the best management and engineering technologies available. We can help you meet structural-engineering challenges associated with:

- ◆ STRUCTURAL DESIGN
- ◆ CODE ASSESSMENT
- ◆ FEASIBILITY STUDIES
- ◆ STRUCTURAL EVALUATION
- ◆ SEISMIC ANALYSIS
- ◆ STRENGTH ANALYSIS
- ◆ HISTORIC BUILDING CONSERVATION
- ◆ SEISMIC RETROFIT OF EXISTING BUILDINGS
- ◆ FOUNDATION DESIGN
- ◆ ANALYSIS AND DESIGN OF NON-BUILDING STRUCTURES

DESIGN REVIEW THIRD PARTY SERVICES

AMADOR LEWIS, INC. engineering staff has several years of experience designing all kinds of buildings and enforcing code provisions. Our staff also has an extensive background in the pre-engineered metal buildings and panelized roof industry. We provide Design Review and Approval for pre-engineered buildings systems and components on the following disciplines:

- ◆ METAL BUILDINGS
- ◆ PANELIZED ROOF STRUCTURES
- ◆ ALUMINUM ENCLOSURES

AMADOR LEWIS, INC. offers full review of drawings and design, as well as review of engineering calculations and specifications. We submit deviation reports to the client, and all the necessary reports and records mandated by the Building Department officials.

FORENSIC ENGINEERING SERVICES

AMADOR LEWIS, INC. has established a Claims Support Division to provide the Insurance Industry and other clients with a diverse range of Forensic Engineering services. Our reports are delivered in a timely manner with comprehensive information to satisfy the particular needs of claims professionals and claims litigation specialists.

AMADOR LEWIS, INC. is committed to providing our clients with the best investigative engineering technologies available. We can help you meet your challenges associated with:

- ◆ CONSTRUCTION FAILURE ANALYSIS
- ◆ STRUCTURAL ANALYSIS REVIEW
- ◆ CODE VIOLATION EVALUATION
- ◆ UPCODING AND RETROFIT EVALUATION
- ◆ RISK MANAGEMENT & SAFETY INVESTIGATION
- ◆ CAUSE AND ORIGIN
- ◆ FIRE LOSS INVESTIGATION

TRAINING

AMADOR LEWIS, INC. provides extensive in-house On the Job Training to employees of **A L I** clients and Co-op students. Special emphasis is placed on training new hires that need design and drafting experience.

CAD

State-of-the-art Computer Aided Drafting equipment is used for a wide range of services. AutoCAD software is the platform for our CAD systems. Each workstation is connected to the **A L I** CAD network and can plot and process vector, raster, and hybrid drawing files. Drawing files can be exchanged in .dwg and .dxf formats.

The training provided to engineers and designers follows clients' established in-house development and processes, and can be tailored to the needs of a specific organization. Our programs typically consist of:

- ◆ Handling small to large size design job as discipline engineers
- ◆ Handling small size detailing jobs as Project Technicians/Detailers

Training is provided in the following categories:

- ◆ Engineering Design
- ◆ Field work associated with engineering design
- ◆ CAD
- ◆ Document Control, Retrieval and Submission of Original Drawings
- ◆ Engineering Support Services
- ◆ Product Detailing

THE WORK PROCESS

I. REQUESTING SERVICES

To make access to services as simple as possible, requests are made completing a Request For Quotation (RFQ) form. A sample RFQ is shown in Attachment I. **A L I** members are always on hand to assist you in the development of services proposal. Services for urgent or priority work can be requested by contacting the President/ C.E.O. However, all verbal requests must be followed up in writing.

Each Request For Quotation should describe the brief scope of work project name and site address, any special requirements (i.e. Building Code, etc.) and Architects info if available, requested proposal date and the requested services completion date. The RFQ form should be approved by a Division Head, a Superintendent or his delegated authority.

II. PROPOSAL DEVELOPMENT

Upon receipt of the RFQ form and after evaluation of the work request, **A L I**'s representative(s) will make a site visit, and meet with the Clients Representative to ensure that the scope of work is accurately defined. **A L I** will then develop the scope of work, the man-hour estimate and forecasts the completion date. A sample EWO form is shown in Attachment II, and will be included as part of the proposal package.

III. PROPOSAL PACKAGE

The services proposal package will include: Services Scope of Work, Professional Services Agreement, Terms and Conditions, and an Engineering Work Order (EWO) form.

IV. ENGINEERING WORK ORDER (EWO)

A L I will schedule the proposed project upon receipt of the client's signed acceptance/ agreement and EWO along with the required retainer (if any).

In-house workload and available resources are evaluated during the development of each Project Schedule. Smaller, short duration projects are normally done using in-house staff. Larger and well-defined projects must be a coordinated effort between **A L I**'s corporate members and International Independent Engineering Consultants. **A L I** is fully staffed to perform the in-house design work and to manage all work awarded to International Independent Engineering consultants while retaining responsibility for the quality and integrity of the work, as well as remaining as "Engineer of Record" for the entire project. A typical activity diagram outlining the basic steps in the development and execution of a EWO is shown in Attachment III.

A L I will inform the client of the project scheduled start and completion dates. The EWO must be approved by a Division Head or Above before work can begin.

THE WORK PROCESS

A L I will assign an Engineering Project Manager (EPM), who has the complete responsibility for the successful performance of services requested.

V. COORDINATION

ENGINEERING PROJECT MANAGERS

Dedicated **A L I** Engineering Project Manager will be assigned for each EWO. EPMs are the single point of contact for the client's organization. Where there is no EPM assigned for a project one of the Project Engineers can be contacted. (Refer to Attachments IV and V for **ALI**'s key contacts.

The EPM work for **A L I** but represent the client's interests in the performance of their work. Typical responsibilities of the EPM(s) include:

- Coordination with the client's organization on all matters concerning the forecasted workload, project priorities, and scheduling of work.

- Establishing **A L I** priorities in conjunction with the client and coordinate these priorities with **A L I** for staff assignments and schedules.

- Reporting regularly to the client management on the scheduling and progress of the work. Discussing areas of concern, if any, and ensure that timely decisions and reviews are made to meet the project's milestones.

Responsibility for the successful performance of the work assigned to **A L I** lies with the assigned EPM. EPMs establish the scope of work, schedule project milestones, monitor progress and resolve technical matters with the client's representative. The project execution priority is decided in coordination with the Client's Project Manager/Coordinator.

VI. REVIEWS

The key to the successful completion of a EWO design package is the amount of commitment and coordinated efforts put in by both **A L I** and client's organization.

In-house quality control checklists applicable to all engineering disciplines as well as CAD work are used to produce a quality design package. Engineering and design reviews are performed to ensure compliance with the scope of work and all applicable standards. Where necessary, other company organizations, for example, Consulting Services, Loss Prevention, Process Engineering, etc., are consulted to obtain clarification if standards are unclear or need to be waived.



THE WORK PROCESS

Client reviews on design packages are carried out at various stages of the work. Normally, client reviews are coordinated by **A L I** Representative in cooperation with Client's Company Operations, Maintenance and Inspection, Industrial Security, Loss Prevention Environmental Affairs, etc. All review comments are consolidated and returned for action to **A L I**.

VII. PROGRESS REPORTING

Progress of the work is tracked using man-hour expenditure and percentage job completion. This ensures that the project milestones are met. Progress reports are transmitted on a monthly basis to all clients for their respective EWOs. In addition, scheduled progress review meetings will be held bi-weekly or monthly between the Client's Division Head/Unit Supervisors and **A L I** Engineering Project Managers to discuss job priorities and areas of concern, if any.

VIII. MONTHLY REPORT

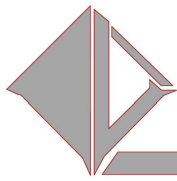
The monthly Reports summarizing the monthly and year-to-date status of the work approved, man-hours expended, man-hours forecasted, active and closed-out EWOs are issued on monthly basis. Subsequently, monthly meetings between the client and **A L I** Management are held to discuss important issues and areas of concern, if any.

IX. COMPLETION

A L I resolves and incorporates client's comments, obtains signatures on the submittal drawings, and issues the package. The client is expected to package the sets of Structural Plans and Structural Calculations Package provided by **A L I**, and submits this package to the appropriate Building Department or Authority in order to obtain a permit for Construction. The client is responsible for providing the Building Dept. /Authority with ALL other permitting requirements in addition to **A L I** provided Structural Package. **A L I** will resolve and incorporate all "Structural" Plan Review Comments pertaining to **A L I**'s scope of services, and will reissue structural plans and calculations as deemed necessary for Building Plans Approval. The EWO is considered 100% complete when the Structural Plans are marked "Approved" by the Building Dept. /Authority.

As construction commences, the client may request **A L I**'s Construction Administration services. The job is then closed out, otherwise.

For future reference, the complete package is sent to the Data/Document Control Unit, where it is stored in a disk and filed.



PROJECT LIST

RESIDENTIAL

- [Custom Single-Family](#)
- [Multi-Story Apartment Complex](#)
- [High-Rise Condominium](#)

COMMERCIAL

- [Professional Offices](#)
- [Retail](#)
- [Wholesale](#)
- [Banks](#)
- [Auto Dealers Showrooms](#)

INDUSTRIAL

- [Warehouses](#)
- [Airplane Hangars](#)
- [Bulk Storages](#)
- [Manufacturing Facilities](#)
- [Agricultural Buildings](#)

INSTITUTIONAL

- [Schools](#)
- [Medical Facilities](#)
- [Churches](#)
- [Government Buildings](#)

FORENSIC ENGINEERING

- [Insurance Claim Support](#)
- [Investigative Engineering](#)
- [Structural Evaluations](#)

PROJECT LIST

NON-BUILDING STRUCTURES

- Masonry and Concrete Retaining walls over 6ft high.
- Masonry and Concrete Cantilevered site walls over 6ft high.
- Unbraced parapets
- Exterior walls at or above the ground floor and parapets braced above their centers of gravity.
- Interior-bearing and nonbearing walls.
- Connections for prefabricated structural elements other than walls.
- Exterior and Interior ornamentations and appendages.
- Signs, Billboards, and Light Poles.
- Storage Racks over 6 ft.
- Permanent floor-supported cabinets and book stacks more than 6 ft in height.
- Anchorage and lateral bracing for suspended ceilings and light fixtures.
- Access Floor Systems.
- Masonry and Concrete Retaining walls over 6ft high.
- Masonry and Concrete Cantilevered site walls over 6ft high.
- Light gage steel and Wood Partitions.
- Equipment Support and Seismic Anchorage.
- Tanks and vessels, including support systems.
- Electrical, mechanical, and plumbing equipment and associated conduit and ductwork and piping.

FEATURED PROJECTS:

Rapunzel J. Amador Lewis, P.E. served as the "Civil Engineer of Record" on hundreds of projects. We invite you to visit our website for a comprehensive list of our featured projects.



JOIN OUR FAMILY

KEY MEMBERS & CONTRIBUTION

Rapunzel J. Amador Lewis, BSAE, PE, A.SEAOC, M.ASCE, M.ACI, M.ICC - Rapunzel offers over 15 years of experience in analysis and design of building and non-building structures, which include but not limited to, new construction or tenant improvements/addition/remodel of wood, masonry, concrete, aluminum, metal, and steel structures for residential, commercial, industrial and institutional projects. Rapunzel is a registered Professional Engineer in AK, AL, AZ, CA, CO, ID, MT, NV, OR, UT, and WA, and is certified in the practice of Structural Engineering with the Structural Engineering Certification Board.

Alvin E. Lewis, Jr., A.S. CEDT - Alvin offers over 25 years of experience in Engineering Drafting, Structural Detailing, Project Management, and Building Cost Estimating. Alvin has working knowledge of 2D and 3D CAD Systems, BASIC programming language, and is conversant with various engineering programs and Computer Information Systems.

Zenaida R. Amador, B.S.M.T. – Zenaida offers over 25 years of public relations and administrative services experience gained in the medical field, as well as the airline industry.

Dino L. Amador, B.S.E.E. - Dino offers 32 years of combined professional experience in Engineering and design, project management, construction, operations and maintenance support in the field of electrical power distribution, instrumentation and control system for Oil and Gas Plants, Oil Refineries, R&D Facilities, commercial and industrial projects.

Leuvino B. Amador, B.S.C.E. - Leuvino offers 29 years of combined professional experience in engineering, project management & supervision, construction & estimating for building structures, which include, but not limited to, new construction, improvements/ renovation/ extension of wood, masonry, concrete, aluminum, metal and steel structures for residential, commercial, religious & government projects.

Magdalena Dela Gracia-Reyes M.S.S.E. - Magdalena offers over 21 years of experience in analysis and design of building and non-building structures, which include, but not limited to, new construction or tenant improvements/addition/remodel of wood, masonry, concrete, aluminum, metal and steel structures for residential, commercial, industrial and institutional projects.

Ralph M. Montierro, A.S.CIS – Ralph offers 5 years of experience in customer service oriented field, Computer Information System Industry, and AutoCAD drafting.



EMPLOYMENT OPPORTUNITIES

AMADOR LEWIS, INC. is a growing company and we feel that all of us have the opportunity to benefit. We want to maintain the benefits of our current environment as we expand and grow the company over the coming years.

To reach our goal we must provide superior service to our customers and this means employing the best people. As a member of the **ALI family**, you are critical to our success. Through your success we can reach our goals.

AMADOR LEWIS, INC. strives to create an exciting, challenging and rewarding work environment that allows you to flourish. As a dynamic company, we offer many career opportunities. We want you to build a long and successful association with **ALI** and be a happy and productive member of our **family**. Through your dedication, creativity, **perseverance**, and efforts, our company will continue to grow.

We invite you to join our family **AMADOR LEWIS, INC.** and our best wishes for success. We appreciate your confidence in our future. Let's grow together.

Sincerely,

Rapunzel J. Amador Lewis, B.S.AE, M.SEAOC, M.ASCE, P.E.
President and CEO



ATTACHMENT I

KEY CONTACTS

Name: **Rapunzel J. Amador Lewis, P.E.**
Title: **President and C.E.O.**
E-mail: rapunzel@amadorlewis.com
Ext:

Name: **Alvin E. Lewis, Jr.**
Title: **Vice President and C.O.O.**
E-mail: alvin@amadorlewis.com
Ext: 103

MAILING ADDRESS:

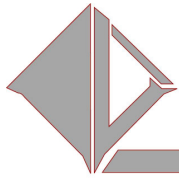
P.O. BOX 2999
TURLOCK, CA 95381

MAIN OFFICE:

134 REGIS STREET, SUITE D
TURLOCK, CA 95382
TELEPHONE: 209.667.7298
FAX: 209.667.7281
WEBSITE: www.amadorlewis.com

P.O. Box 2999, Turlock, CA 95381 Tel 209.667.7298 Fax 209.667.7281 www.amadorlewis.com

ATTACHMENT II



AMADOR **L**EWIS, INC.
CONSULTING ENGINEERS

"Providing Structural Engineering Solutions with Creative Options"

REQUEST FOR QUOTATION (RFQ)

CLIENT TO FILL OUT

REQUEST FROM (COMPANY NAME):	EIN OR SSN:
------------------------------	-------------

ORIGINATED BY:	CLIENT ADDRESS:	TEL:	FAX:	E-MAIL:
----------------	-----------------	------	------	---------

AMADOR LEWIS, INC. INFO:

CONTACT NAME:	ADDRESS:	TEL:	FAX:	EMAIL:
Rapunzel J. A. Lewis, P. E.	P.O. Box 2999, Turlock, CA 95381	209.667.7298	209.667.7281	rapunzel@amadorlewis.com

PROJECT DETAILS

PROJECT NAME	REQUESTED ENGINEERING SERVICES PROPOSAL DATE: (mm/dd/yy)
SITE ADDRESS:	REQUESTED ENGINEERING SERVICES PROPOSAL DATE: (mm/dd/yy)
Architect of Record Address:	Phone: Fax:

BRIEF SCOPE OF WORK:

SPECIAL REQUIREMENTS:

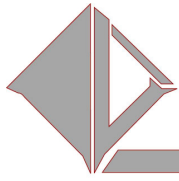
Building Code: Wind Exposure
 Wind Speed: Distance in km from active fault:
 Seismic Zone Floor Dead Load:
 Roof Dead Load:

ESTIMATED MAN HOURS	ESTIMATED COST:	ACTUAL MAN HOURS	FORECAST FINAL REVIEW PACKAGE SUBMISSION DATE:
---------------------	-----------------	------------------	---

CLIENT SIGNATURE:	NAME:	TITLE:	DATE:
-------------------	-------	--------	-------

P.O. Box 2999, Turlock, CA 95381 Tel 209.667.7298 Fax 209.667.7281 www.amadorlewis.com

ATTACHMENT III



AMADOR **L**EWIS, INC.
CONSULTING ENGINEERS

"Providing Structural Engineering Solutions with Creative Options"

ENGINEERING WORK ORDER (EWO)

CLIENT TO FILL OUT

EWO NO:	REVISION:	ALI PROPOSAL NO:	PROJECT NAME:	DATE:
---------	-----------	------------------	---------------	-------

EWO TITLE:

CLIENT INFO: COMPANY NAME:

CONTACT NAME:	CLIENT ADDRESS:	TEL:	FAX:	EMAIL:
---------------	-----------------	------	------	--------

AMADOR LEWIS INC. INFO:

CONTACT NAME:	ADDRESS:	TEL:	FAX:	EMAIL:
Rapunzel J. Amador Lewis, P.E.	P.O. Box 2999, Turlock, CA 95381	209.667.7298	209.667.7281	rapunzel@amadorlewis.com

SCOPE OF WORK:

ESTIMATED MAN HOURS	ESTIMATED COST:	ACTUAL MAN HOURS	FORECAST FINAL REVIEW PACKAGE SUBMISSION DATE:
---------------------	-----------------	------------------	--

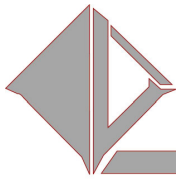
ALI SIGNATURE	NAME: Rapunzel J. Amador Lewis, P.E.	TITLE: President and C.E.O.	DATE:
---------------	--	---------------------------------------	-------

THIS IS A VIABLE PROJECT AND IN ACCORDANCE WITH THE ABOVE, I AGREE TO PROCEED WITH THE WORK:

THIS IS NOT A VIABLE PROJECT AND SHOULD BE CANCELLED:

CLIENT SIGNATURE:	NAME:	TITLE:	DATE:
-------------------	-------	--------	-------

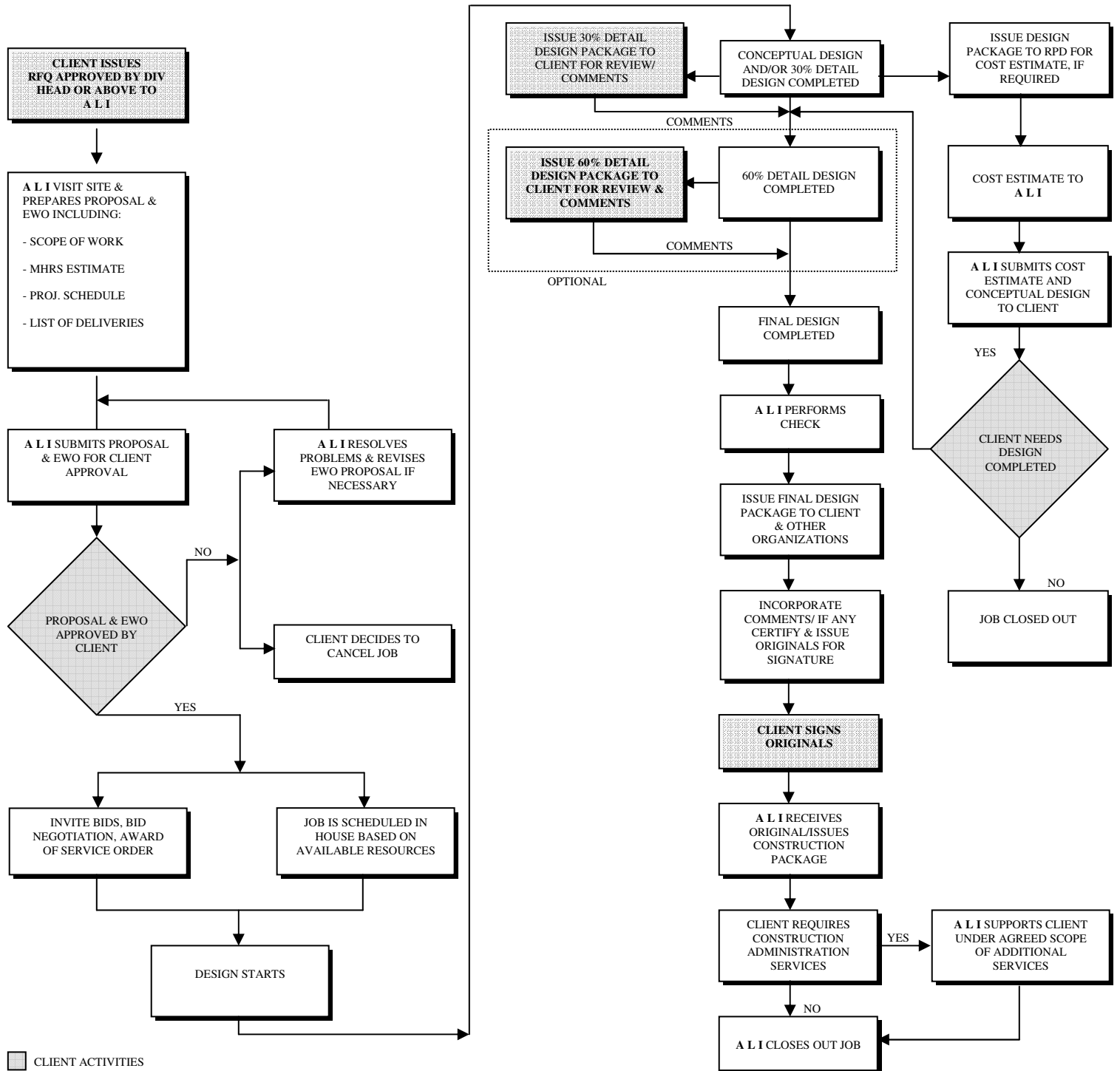
ATTACHMENT IV



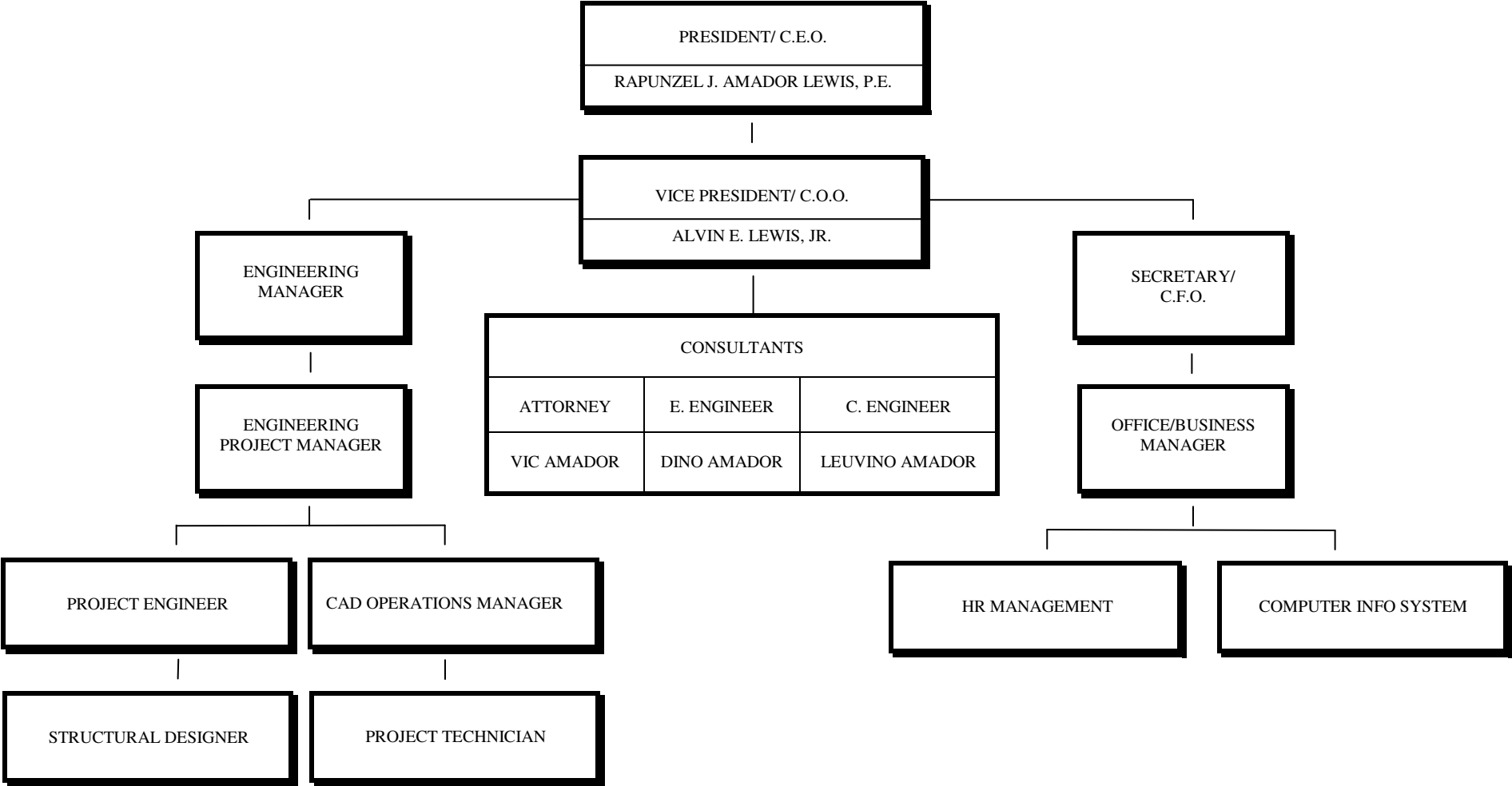
AMADOR **L**EWIS, INC.
CONSULTING ENGINEERS

"Providing Structural Engineering Solutions with Creative Options"

TYPICAL EWO ACTIVITY DIAGRAM



ORGANIZATION CHART





ATTACHMENT VI

KEY MEMBER PROFILES

ALI - MEMBERS SPECIALTIES

RAPUNZEL J. AMADOR LEWIS, P.E. – **PRESIDENT / PRINCIPAL ENGINEER** –
STRUCTURAL ENGINEERING/DESIGN/ANALYSIS/PROJECT MANAGEMENT/
OPERATIONS/ SALES/ MARKETING

ALVIN E. LEWIS, JR. – **VICE PRESIDENT AND COO** – RAFTING/DETAILING/PROJECT
MANAGEMENT/COST ESTIMATING/ OPERATIONS/SALES/MARKETING

DINO L. AMADOR – **CONSULTANT ENGINEER** –
ENGINEERING BUSINESS MANAGEMENT AND PROCESSES.

LEUVINO B. AMADOR – **INTERNATIONAL CONSULTANT** –
STRUCTURAL ENGINEERING/DESIGN/ANALYSIS/PROJECT MANAGEMENT

MAGDALENA DELA GRACIA-REYES – **INTERNATIONAL CONSULTANT ASSISTANT** –
STRUCTURAL ENGINEERING/DESIGN/ANALYSIS/PROJECT MANAGEMENT



RAPUNZEL J. AMADOR LEWIS, P.E., SECB

EDUCATION

B.S. in Architectural Engineering	1994
Dean's Honor List	
California Polytechnic State University, San Luis Obispo	
Masters in Business Administration	2006
California State University Stanislaus, Turlock, CA	

QUALIFICATIONS AND EXPERIENCE:

I offer over 14 years of experience in analysis and design of building and non-building structures, which include, but not limited to, new construction or tenant improvements/addition/remodel of wood, masonry, concrete, aluminum, metal and steel structures for residential, commercial, industrial and institutional projects.

As President and owner of Amador Lewis, Inc. Consulting Engineers, from its incorporation in December 2005, to its current stage, I face daily challenges of operations, as well as performing all structural engineering services for our customers in the residential, commercial, and industrial sectors of the building construction industry. I have managed the company with as many as six employees throughout its operations. Our highly specialized engineering design and consulting services in the pre-engineered metal building systems is sought after by manufacturers, builders, and other structural engineering firms.

As Head of the Civil/Structural Engineering Department for Compleere Engineering Group, Inc., a multi-discipline consulting/engineering firm, I spent 4 years in-responsible-charge of project structural engineering management and design utilizing all material of construction; provided Building Inspections and Investigative Engineering services for existing properties; conducted extensive research, development and design for aluminum enclosures; and worked on seismic retrofit of Unreinforced Masonry buildings, employing applicable building conservation codes for Historic Buildings. I was responsible for preparation of complete structural engineering calculations and plans for the building or non-building structures and its foundation systems, review of submittals and shop drawings, and construction administration.

As Engineering Manager for Panelized Roof Structures, Inc., for an interim period of 7 months, I was offered the position to organize and start an Engineering Department within the current structure of this construction company.

As a Civil Engineer for JH Lawder, Inc. Structural Engineers, a local structural engineering firm, for a period of 1 ½ years, my responsibilities included preparation of entire Structural Engineering Package submittals for building permit, as well as review of shop drawing documents as required for projects in residential, commercial, industrial, and institutional buildings.

As a Design Engineer for VP Buildings, Inc., a pre-engineered metal building manufacturer, I spent over 5 years performing structural engineering design and management of projects through all phases of construction and was responsible for investigation of alternatives and selection of an appropriate framing system for the interaction of structural components to support vertical and lateral loads of a static and dynamic nature.

I currently hold membership within the following professional and civic organizations:

Structural Engineers Association of Central California – Associate
American Society of Civil Engineers – National Member
American Institute of Steel Construction – Professional Member
American Concrete Institute – National Member
International Code Council – Member
Society of Women Engineers – Member
Building Trades Organization - Member
Modesto Engineers Club – 2004-2005 Secretary/Treasurer, 2005-2006 V.P., 2006-2007 President & Board Chairman
Modesto Rotary – Member
National Engineers Week – Future City Competition – Northern CA Regional Co-Coordinator

Rapunzel is a registered Professional Engineer in the following States: AL, AK, AZ, CA, CO, ID, MT, NV, OR, UT, & WA and is certified to practice Structural Engineering with the Structural Engineering Certification Board (SECB)

P.O. Box 2999, Turlock, CA 95381 Tel 209.667.7298 Fax 209.667.7281 www.amadorlewis.com



PROFESSIONAL BACKGROUND

ALVIN E. LEWIS, JR.

TITLE: Vice President and C.O.O.

EDUCATION Associate of Technology Degree in
Commercial Engineering Drafting and Technology
Bailey Technical School, St. Louis, MO.
An Education Service of ITT

QUALIFICATIONS AND EXPERIENCE:

Alvin offers over 25 years of experience in Engineering Drafting, Structural Detailing, Project Management, and Building Cost Estimating.

As an Estimator for an International Metal Building Manufacturer, VP Buildings, Inc., for over 7 years, Alvin is responsible for a complete pre-engineered metal building cost estimate for all types of building uses and occupancy, utilizing 3D-graphic computer system interface. He provides schematic building design and value engineering exploring alternate framing systems to support vertical and lateral loads.

As a Project Manager for VP Buildings, Inc., for over 4 years, Alvin provided Structural Engineering Management through all phases of design and construction, and contract administration from project start to completion date. In addition, he was responsible for logistics and project coordination, order clarifications and project details, scheduling, delegating and supervising engineering detailing tasks to qualified technical staff, utilizing 3D-graphic computer system interface.

As a Project Technician for two Metal Building Manufacturers for over 9 years, Alvin has prepared fabrication drawings for building components from engineering layout information and building plans For Construction. In addition, he was in responsible charge of investigating Quality and Service claims pertaining to detailed parts.

In his early years of drafting, Alvin also had the opportunity to work for Mid-Coast Aviation, Inc., creating fabrication drawings for airplane parts.

Alvin has working knowledge of 2D, 3D CAD systems, and structural 3D Analysis Systems, BASIC programming language, and is conversant with various engineering programs and Computer Information Systems.



PROFESSIONAL BACKGROUND

DINO L. AMADOR

TITLE: Consultant

EDUCATION B.S. in Electrical Engineering Feati University, Philippines
 Electric Energy System University of California at Irvine
 • Electrical Power System • Instrumentation & Control • ETAP
 • Project Management • CII Best Practices • Value Engineering

QUALIFICATIONS AND EXPERIENCE:

Dino offers over 34 years of combined professional experience in engineering & design, project management, construction, operations & maintenance support in the field of electrical power distribution, instrumentation & control system for Oil & Gas Plants, Oil Refineries, R&D Facilities, commercial and industrial projects. Dino’s professional experience is further defined:

- Supervised a group of multi-discipline engineers, designers & drafter/ CADD operators
- Prepared engineering scope of work, project cost estimates and bid packages
- Performed electrical power system analysis, arc flash calculations utilizing the ETAP computer program
- Designed single line diagram, elementary diagram, loop diagram, schematic & wiring diagram
- Engineered & designed substations including protective relaying, SCADA/RTU system applications
- Engineered and designed HV/MV/LV power distribution, motor controls and lighting systems.
- Designed field instrumentation, fire & gas alarms, intra-plant communication system and PLC application
- Designed life safety & plant security systems
- Wrote specifications for the procurement of major electrical, instrumentation and automation equipment
- Reviewed and approved electrical & instrument design drawings. Managed engineering consultants
- Participated in plant turnaround and electrical systems commissioning
- Provided technical support for construction, plant operations and maintenance activities

Dino held increasing responsibilities from the following positions:

October 14, 2003 – Present	Sr. Project Engineer Facilities Engineering Dept.	Stanford Linear Accelerator Center Menlo Park, California
September 1996 – June 15, 2002	Supervising Engineer Project Design Division	Aramco Oil Company Udhailiyah, Saudi Arabia
December 1991 – September 1996	Sr. Electrical Engineer	Abqaiq, Saudi Arabia
October 1988 – December 1991	Sr. Electrical Engineer Technical Services Dept.	Mobil Oil Corporation Torrance, California
May 1983 – October 1988	Principal Engineer Consulting Engineering	Holmes & Narver Orange, California
January 1980 – May 1983	Design Specialist Engineering & Const.	Fluor Engineers & Constructors Irvine, California
May 1978 – January 1980	Plant Electrical Engineer Plant Engineering	Lawrence Livermore Laboratories Livermore, California
February 1973 – May 1978	Electrical Designer Engineering & Const.	Bechtel Inc. San Francisco, California



PROFESSIONAL BACKGROUND

LEUVINO BRION AMADOR

TITLE: International Consultant

EDUCATION: B.S. in Civil Engineering
Manuel L. Quezon University, Philippines

Training
AutoCAD 2006 with Color Rendering-Level I & Level II
MICROCADD Technologies Co., Inc., Philippines

QUALIFICATIONS AND EXPERIENCES:

Leuvino offers 31 years of combined professional experience in engineering, project management & supervision, construction & estimating for building structures, which include, but not limited to, new construction, improvements/ renovation/ extension of wood, masonry, concrete, aluminum, metal and steel structures for residential, commercial, religious & government projects. Leuvino's professional experience is further defined:

As Project Engineer/ Manager/ Contractor/ Owner of Amador Engineering Group, Leuvino is in responsible charge of project engineering management through all phases of construction. Leuvino trains and develops the skills of his work force especially in masonry & carpentry finishes to conform to plans and project specifications.

Leuvino is a member of the Philippine Institute of Civil Engineers and is a registered Civil Engineer with Professional Regulations Commission License No. 24199.



PROFESSIONAL BACKGROUND

MAGDALENA DELA GRACIA-REYES

TITLE: International Consultant – Structural Engineer

EDUCATION

PhD in Geotechnical Engineering
University of the Philippines, Diliman, Quezon City, Philippines

M.S. in Structural Engineering
Pamantasan Ng Lunsod Ng Maynila, Intramuros, Manila

B.S. Civil Engineering
Far Eastern University, Manila, Philippines

TRAINING:

- 11th ASEP International Convention
- RSA Project Management for Project Managers
- ETABS, STAAD Pro, AutoCAD
- Planning and Estimating
- Seismic Analysis
- PERT/CPM

QUALIFICATIONS AND EXPERIENCE:

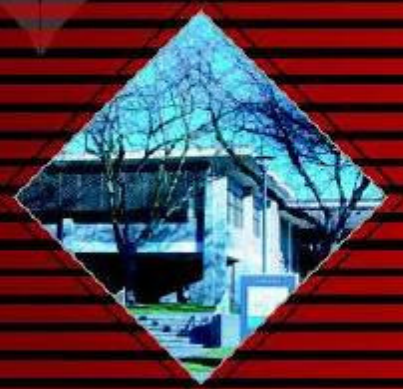
Magdalena offers over 23 years of experience in analysis and design of building and non-building structures, which include, but not limited to, new construction or tenant improvements/addition/remodel of wood, masonry, concrete, aluminum, metal and steel structures for residential, commercial, industrial and institutional projects. Magdalena's professional experience is further defined:

As Civil/Structural Engineer/Consultant of a large multi-discipline consulting firm, Magdalena is in responsible charge of project structural engineering management and design utilizing all materials of construction. She has provided review and evaluation of project requirements; preparation of design development documents consisting of parameters, specifications; review of structural drawings for submittal and construction implementation; building site inspections; and field support and troubleshooting. Her featured projects include heavy Industrial plants/facilities constructed all over Philippines, in Vietnam, in Indonesia, and Malaysia.

As Head Civil/Structural Engineer of several consulting firms, Magdalena was in charge of preparation of structural designs of Industrial buildings, particularly Cement Plants including various mechanical equipment supports for concrete and steel structures. She has coordinated with various trades on the complete project implementation; evaluated and reviewed all drawings for final implementation; trained engineers from basic to multi-skilled structural designers; performed site inspections; and scheduled project manpower.

Magdalena is a registered Civil/Structural Engineer in the Philippines, and is a member of the following professional organizations:

- Philippine Institute of Civil Engineer (PICE) - Member
- ASEP - Member



P.O. Box 2999 Turlock, CA 95381
Tel 209.667.7298 Fax 209.667.7281 www.amadorlewis.com